

APERTURE COMPOSITION EYE PASSION
GALLERY PRINT EDIT FINE ART
TIME SHADOWS PAPER PRINT LONG EXPOSURE
HIGHLIGHTS COMPOSITE
TEACH FRAMES SHUTTER DODGE
& WHITE PORTRAIT **BOOTH PHOTOGRAPHY GUILD** & BURN LANDSCAPE
BLACK COLOR CAPTURE ZOOM FILM
CAMERA FILTERS FOCUS VISUALIZE DIGITAL
SOUL LIGHT THOUGHT-PROVOKING CROP
MUSEUM BEAUTY VISUALIZE DIGITAL **2023**
ANNUAL EXHIBITION



THE BOOTH MUSEUM

It has been my pleasure over the past 12 years to see the Booth Photography Guild develop and grow in many ways – membership, reputation, creativity, prestige, diversity and geographic reach. I am very proud of what Lynn Henderson, John Mariana and other leaders have accomplished, making BPG an important facet of the Booth Museum. Another sign of growth is the continual increase in quality and scope of the annual juried exhibition, with 2023 being no exception. Enjoy!

Seth Hopkins, BWAM Executive Director, BPG Member



The Booth Photography Guild pursues, develops and passionately endeavors to bring about an increased interest in photography as an art form. We accomplish this by educating photographers of all levels, by exhibiting our photographers' work, and by producing digital and in-person exhibitions for the community to enjoy. The Guild cultivates photography enthusiasts who are patrons, members and guests of the Booth Western Art Museum. The Booth Photography Guild is a member of the Photographic Society of America (psa-photo.org) and an integral part of the Booth Western Art Museum. If you have an interest in photography, we invite you to join the guild, visit a show or exhibit, or make a purchase. For more info about the guild, contact getinfo@boothphotographyguild.org

BOOTH PHOTOGRAPHY GUILD, EST. 2010

WELCOME TO THE 2023 BPG ANNUAL EXHIBITION!

Congratulations to the BPG members who had images juried into this year's Exhibition. Two highly regarded professional photographers were the judges and jurors: Jeff Milsteen and Horace Hamilton. Entries were selected based on their technical merit, artistic quality, visual impact, and ability to tell a story. This stunning photography Exhibition is on display in the Borderlands Gallery of the Booth Museum for three months for museum attendees to enjoy.

Many forms of photography are represented this year, including nature, architecture, street, portraits, and composites, to name a few. Each photographer's vision is unique and, in this book, is accompanied by a brief story about their inspiration when taking the image. Within these pages you will journey from a beautiful sunrise over Red Rock Canyon Park, the gaze of a lion deep in thought, the delicate mystery of a milkweed seed, past a violinist playing on driftwood on Talbot Island and a child in a creepy clown costume hanging out on a swing bridge in a playground, to a haircut experience in one of the last remaining traditional barbershops. There is so much to see!

Dedicated volunteers made this Exhibition possible. I offer a special thank you to the judges Jeff Milsteen and Horace Hamilton, to Lynn Henderson for her unwavering leadership, to Julie Low for documenting and creating a procedures manual that has been invaluable (and will continue to be for future chairs) and of course, to the Booth Museum for its ongoing encouragement and support of the Booth Photography Guild. So go ahead! Turn the pages and enjoy seeing through the eyes of these accomplished artists.

MICHAEL ROGERS
Chair, 2023 BPG Annual Exhibition



ARNOLD ABELMAN
Marietta, Georgia
arnold.abelman@gmail.com

MOULTRIE SUNRISE

I was inspired by the gorgeous sunrise lighting up the early morning scene on Lake Moultrie in South Carolina. The long exposure needed to light the scene served to also smooth the water in the foreground and the sky.

CHRIS DAHL
Acworth, Georgia
sblaker@comcast.net

ANGELS ARE NEAR

This image was captured in my backyard, Acworth GA. I have a bird “studio” set up to photograph my backyard birds. I fasten dead wood to a bracket I built and installed near the feeder. This gives the birds a place to queue up while waiting for a spot on the feeder. The image has some minor adjustments made to it. The limb was a little close to the bird’s bill, so I moved it away slightly in Photoshop. The rest of the adjustments are mainly cosmetic removing blemishes to minimize the eyes attraction to them. The title comes from old sayings my mother used to tell me, and when I see a Cardinal today, I believe her Angel is nearby. The photo was captured with a Nikon Z7ii, at 600mm, 1/1250 F6.3. This rendered a wonderful bokeh.





LAWRENCE BAKER
Atlanta, Georgia
baker.lawrence42@gmail.com

BIRD IN PARADISE

I took this photo of the Bird of Paradise in Costa Rica a few years ago. The flower gets its name from its resemblance to the showy forest birds known as birds-of-paradise. Upon seeing this flower in the wild, I was struck by its regalness, elegance and vibrant colors. The original background consisted of unspectacular leaves. In the Photoshop “darkroom,” I accentuated the flowers colors and removed some distracting elements. I also chose to leave in some of the flower’s imperfections to let the viewer know it was a real flower, as true perfection in this world is extremely rare. As a final touch, I added some texture to give the appearance of a painting. I decided to replace that background with another image, also taken in Costa Rica that fittingly placed the flower in its element. Thus, my naming it “Bird IN Paradise.”



LAWRENCE BAKER
Atlanta, Georgia
baker.lawrence42@gmail.com

DILAPIDATED FARMHOUSE

I took this photo in the rich farmland of the Palouse in eastern Washington State, where wheat and legumes are grown. Unlike the flat farmlands in most areas of the U.S, the Palouse’s terrain consists of gentle rolling hills that stretch on as far as the eye can see. The landscape is surprisingly peaceful. Strangely, abandoned, dilapidated farmhouses dot the scene, adding unexpected charm to the Palouse. Why so many were left to the ravages of the elements is not clear. I took this photo from the inside of another abandoned building that I probably should not have entered. To get the building framed required me to contort my body into a precarious position. I chose to include the windows which were askew, the neglected foreground vegetation and the mostly barren farmland, as these elements mirrored the condition of the farmhouse.



BONNIE BEUTH
Smyrna, Georgia
BonnieBeuth@gmail.com

SWIRLING

This photo was taken at the dance theatre at Kennesaw State University Department of Dance on an evening when the Booth Photography Guild had the opportunity to take over the theatre and photograph several performances. Maya Dubuc is the beautiful dancer photographed here. In color, she's wearing a pink tutu against a bluish stage. While I was happy with the color version of this photograph, when I converted it to black and white, the real essence of the photo came through. The focus went from beautiful ballerina to seeing more clearly the graceful athleticism of a dancer. The thing I love the most about this photo is the joy on Maya's face. The tip of her toe grounds her on the stage, but the sheer joy in her face looks like she's flying free.

SCOTT BLAKER
Dallas, Georgia
sblaker@comcast.net

STAIRWAY TO HEAVEN

This is one of two identical spiral staircases standing opposite each other in the great hall of the Trustees' Office at the Pleasant Hill Shaker Village in Kentucky. Shaker architecture is typically very severe and entirely unadorned, and while the community was populated almost all buildings were off-limits to non-members. But, because the Shakers required some limited interaction with the outside world in order to conduct commerce, the Trustees' Office was designated as the one point of contact with non-members, and it was intentionally constructed in a fashion designed to be more familiar and appealing to those guests. These elegant staircases are evidence of the attempt to suitably impress visitors, though even here they evince the Shaker tradition of maintaining segregated facilities for men and women.





JENN CARDINELL

Lilburn, Georgia

jenncardinellphotography@gmail.com

PORTRAIT OF A KING

While at Zoo Atlanta, I admired five sleeping lions all cuddled up together. One woke up, walked about 10 feet from the others and sat down. He just gazed into the distance and seemed to be deep in thought. His expression and posture were so regal. I wondered what he was thinking about. He sat there about 5 minutes, barely moving, then slowly turned to join the others.

SHARI GARNSEY

Canton, Georgia

SRGarnZPhoto@gmail.com

BLENDING IN

Growing up in western Montana, I was always fascinated by the abandoned and deteriorating structures that would sit in isolation in the middle of the prairie... standing like ghosts of someone else's existence. With the way things age in the dry, western sun, these structures could be 50 — or 150 — years old. Who lived there... and when...and where did they go?

This ghost was captured near the Missouri Headwaters, Three Forks, Montana.





BOB CASPAR
Chatsworth, Georgia
bobcaspar@aol.com

TRAPEZOID

I have always been fascinated with architecture and in particular with staircases, old windows and old doors, especially those in Europe. This was a bonus to find nearby.

This image, entitled “Trapezoid” was taken in the Greenville County Museum of Art in Greenville, SC in 2022. I was there to see an Andrew Wyeth exhibit and the elevator was out of order so we had to climb the 5 flights of stairs. Arriving at the top I looked over the railing and this is what I saw. It was a beautiful scene.

BOB CASPAR
Chatsworth, Georgia
bobcaspar@aol.com

YELLOW WAGON

This image, entitled “Yellow Wagon,” was made at The Lindale Cotton Mill in July 2021. The title is actually a misnomer. Look closely and you will see that it is an image of a yellow metal tub sitting on an old rusty hand truck.

I didn’t think “yellow tub” was a good name, so I improvised. The image is a glimpse of the workings of the old mill that was built in 1896 and was operational until 2001. It is now used as a wedding and event venue.

This image was shot with my Canon EOS 6DII, using a 24-70mmF/4L lens @ 50mm, ISO400, at 1/SEC. mounted on a Vanguard Alta Pro 263AB tripod.





DAVID CHAMBERS
Sierra Madre, California
drdavechambers@gmail.com

WATCHING

To the left in the frame, a man leans casually against a sturdy pole, his back partially resting against it. A cigarette held between his fingers, releasing a thin trail of smoke that lazily swirls upward, disappearing into the atmosphere. His gaze, fixed upon a young happy couple, is closely observing their vivid embodiment of youth and happiness.

The contrast between the man and the couple is palpable. While the man remains solitary, engrossed in thoughts we can only speculate upon, the couple represents an embodiment of carefree love and togetherness. Their stride suggests an unwavering connection, as they navigate the city's rhythm with their shared enthusiasm.

The photograph captures a poignant moment in time, frozen forever. It invites viewers to reflect upon the intricacies of human experiences—loneliness and connection, individuality and togetherness—within the bustling fabric of city life.



DAVID CHAMBERS
Sierra Madre, California
drdavechambers@gmail.com

RED ROCK SUNRISE

In this wide-angle image, the magic of a new day unfolds in all its glory. The scene captures the awe-inspiring spectacle of a sunrise over Red Rock Canyon Park. The rising sun on the horizon is ablaze with hues of yellow, pink, blue and orange blending seamlessly with the warm glow of the sunlight. At the right of the frame, a tree stands against the radiant backdrop. It appears as a resilient sentinel of the desert, and serves as a focal point, anchoring the composition and providing a sense of scale.

This image captures a fleeting moment of natural beauty and invites viewers to immerse themselves in the sublime tranquility of the western desert landscape. It stands as a testament to the harmonious dance between light and land, reminding us of the eternal wonders that unfold with each new dawn.



LINDA COATSWORTH
Avondale Estates, Georgia
donandlinda2@comcast.net

A STUDY IN TEXTURE

This image just seemed to work better in black and white. At first I thought it was quite busy, but looking further, it was fun juxtaposing and comparing one texture to the next. A throw that normally resides on the back of an overstuffed family room chair was used as the textured background. The different parts of the Lenten Rose, stem to stern, comprise the softer parts of the image, but all with their own unique textures, working with each other for an image which is asking you to spend more time perusing.

LINDA COATSWORTH
Avondale Estates, Georgia
donandlinda2@comcast.net

DANCE OF THE FLUFF SEEDS

Another variation on my Milkweed fluff seed theme. The seed pods reminded me of a dancer's legs/muscles/delicacy/strength with the fluffs as a ballet dancer's attire. Each fluff dances its direction in the wind toward a landing that will create new plants, attracting our wonderful butterflies and bees who stop briefly for nectar or pollen, then on to their next interesting spots.





SUSAN JAMES
Cumming, Georgia
susanvjames@gmail.com

BLOSSOMS AND TEARS

A beautiful blooming tree against the rose-gold background of an adobe-style building in Santa Fe. I hurriedly shoot a single picture and we move on. While going through my photos post-vacation, I notice the woman on the bench: her presence in this hasty shot has made the moment. She wipes an eye. Her focus is inward... perhaps dwelling on a heartbreak? We all go through seasons in life where we put on a brave face, but in private are laid waste by some upset. We indulge in despair, forgetting that we live in a marvelous world: something beautiful is always close at hand, even if we are blinded to it at the moment.

Or, perhaps... she just suffers from an allergy? All I can do is share what I have captured. It is up to the observer to assign meaning. What story does this image impart to you?

SUSAN JAMES
Cumming, Georgia
susanvjames@gmail.com

WELL SEASONED

We arrive from Alamogordo for the noon tour. It is 92 degrees. A merciless sun beats down from a cloudless sky. Disappointing deep shadows are everywhere. Ken frowns, however time is limited so we shoot what we can. We find relief inside the Stratford Hotel. The dining room looks like folks left the table in a hurry 100 years ago, and nobody has been back to clean up since. The hotel kitchen is frozen in time, perfectly as it was when it cooked the last supper. These cast iron pans and their companion utensils hang from the wall, forever waiting to be employed again... or perhaps scrubbed again by their not-yet-infamous handler, young Henry McCarty. Nobody has bothered to clean up the years of accumulated grime, and I love that. These pans are not props. Shakespeare is authentic in a way that so many "historical" places no longer are.





HOWARD KAPLAN
Chattanooga, Tennessee
sadie275@yahoo.com

LA LA LAND

I have been using architectural images of buildings to create abstractions and composites that mirror the energy of cities I have visited.

This photograph is a composite of two iconic Los Angeles buildings, the Getty Museum and the Peterson Automotive Museum. I think the image represents two significant aspects of life in LA - with the Getty representing the dynamic visual arts culture while the Peterson, without question, embodies the unique car culture of the city.

HOWARD KAPLAN
Chattanooga, Tennessee
sadie275@yahoo.com

SCHOOL DAY MEMORIES

Old photographs, postcards, autograph books and memorabilia mean so much to those who have treasured them for many years. Yet, there they are one day, on an estate sale table being sold for a dollar or two - these memories and their histories often discarded by those for whom they no longer have any meaning.

Over the past few years I have acquired random items from these sales and have used them to create still-life photographs. It is, perhaps, a way to preserve a few of their stories.





DEAN KELLEY
Jasper, Georgia
jdeankelley01@windstream.net

A STUDY IN SHAPES

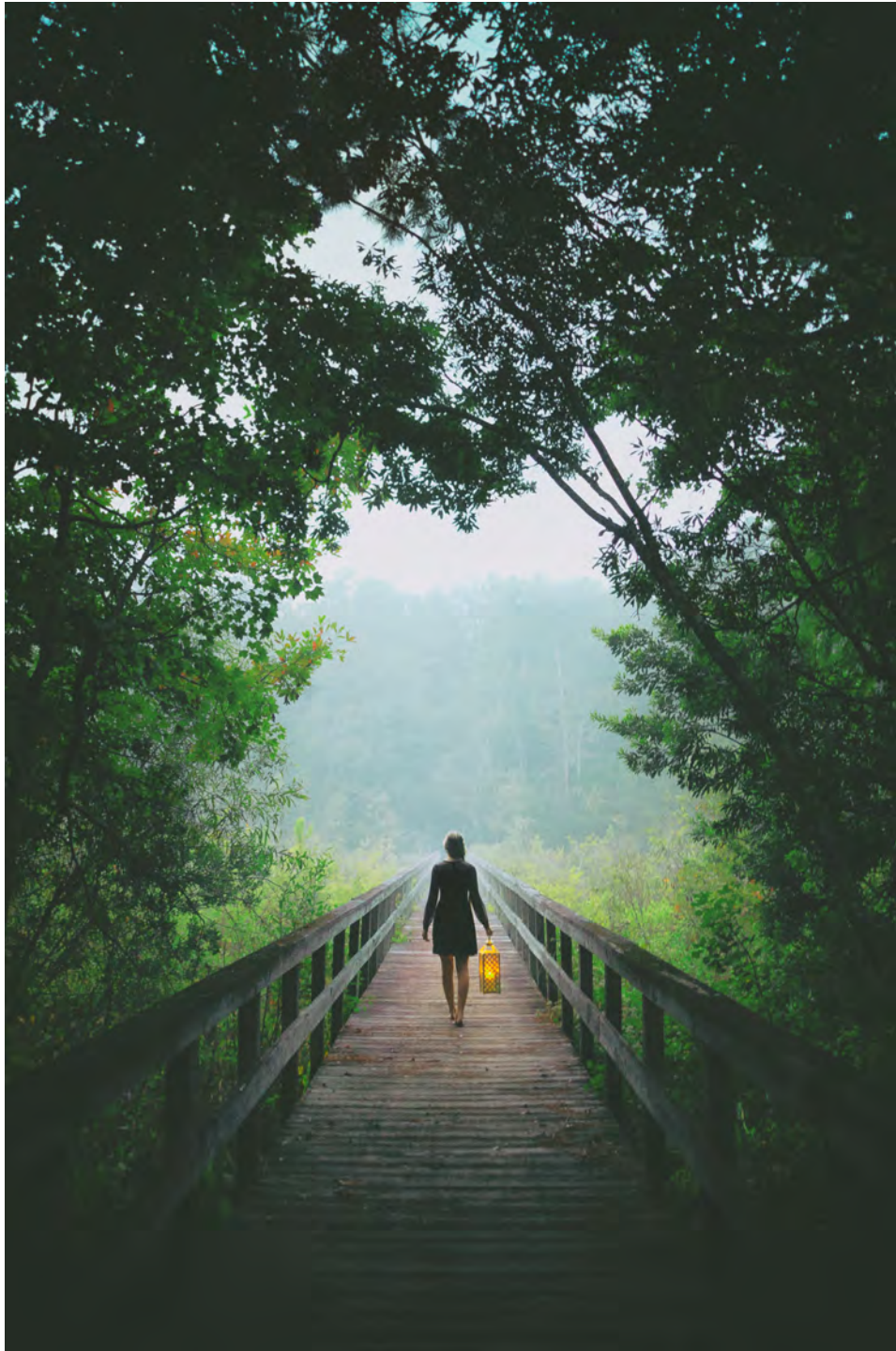
The creation of this image started with an old bottle that I found in the woods behind our house. It was filled with dirt and grime. After many washings it was ready to go. I loved the shape of the bottle and knew that it had a place in one of my photographs. After trying many configurations nothing seemed to work well. Two bottles in a row were not enough and four was too many and we have been told that even numbers are boring. I decided to be bold and flip the fifth bottle upside down and then the magic appeared.



DEAN KELLEY
Jasper, Georgia
jdeankelley01@windstream.net

NIGHT LIGHT

To me there is beauty in solitude. The loneliness and the dampness of the fog can be felt in the dark. I have always been fascinated with train cars and old buildings and fog. I decided to combine all three in this composite. The only element photographed at night was the light pole. The box car and the building were photographed in daylight.



AIMEE LEE
Douglasville, Georgia
aimeeleemt@gmail.com

INTO THE LIGHT

This image was taken in Fleming Island, Florida during the fall of 2018. The girl in the photo is the daughter of a dear friend. I had the idea for this image after seeing this walkway on a foggy morning. The image isn't a composite. I give most of the credit to the Sigma Art lens I used and to the subject's beauty for the image's resulting ethereal quality.



AIMEE LEE
Douglasville, Georgia
aimeeleemt@gmail.com

RED TIDE

This image was taken during the spring of 2019 in Talbot Island, Florida, at a beach the locals call "Boneyard Beach." This image was from a shoot for senior pictures that turned out amazing.



JULIE LOW
Cartersville, Georgia
jlow@fancythecollection.com

TORN BETWEEN

My husband won't take these shorts off. They are his uniform when working in the yard, garage, and around the house. He regularly jokes that I must sew the button back on for him. I politely refuse with a grin and tell him "they're perfect just the way they are." So, I decided to photograph them before they fell extinct.

After removing my personal attachment to the subject matter, I decided the photo defines hard work, a spirit of authenticity, and the wonder of what and who hides behind the tatters. The implied sense of "story" is heightened by the photo's execution in black and white. Were these shorts worn from battling for survival in a third-world street? Does the camo indicate a macho military connection? Perhaps the shorts are worn from endless struggles between man and dust with a vacuum ... in a middle-class U.S. suburb. Perhaps!



JOHN J MINNICK
Roswell, Georgia
john.minnick.usa@gmail.com

WARM MORNING CABIN LIGHT

Nestled in the heart of the picturesque Smoky Mountains National Park, Cades Cove is a treasure trove of natural beauty and rich history. During a photography workshop led by a BPG world-renowned photographer, I had the privilege of capturing a photograph that perfectly encapsulates the essence of this extraordinary place.

Inside an 18th century log cabin in Cades Cove, I found myself transported back in time. The rustic wooden walls, a grand fireplace and creaking floors whispered tales of the past, while the warm morning sunlight streamed through two windows, creating an ethereal glow that filled the entire space. As I composed the shot, I carefully framed the scene to emphasize the juxtaposition of the natural elements and the man-made structures. The soft morning light poured through the windows, illuminating the rustic interior. It was a delicate balance of nature and human history, merging seamlessly in the frame.



JEFFREY MITCHELL
Marietta, Georgia
jvm1147@gmail.com

DEEP PURPLE

In my 60-plus years of capturing photographic images and production of over 200 finished “Floral Portraits”, this one stands out as my favorite. I love all the flowers I shoot and write about but this one perpetually remains my favorite. I’m compelled to view and shoot the Phalaenopsis Orchid with its distinctive veining in the leaves, graceful arch of its stem and vibrant purple color. I blurred the background fairly heavily, which also contained purple and green colors.

This was taken at the Atlanta Botanical Gardens during their annual “Orchid Daze” wherein they display over 200 varieties of Orchids. The event occurs from mid-February until the end of March.



JEFFREY MITCHELL
Marietta, Georgia
jvm1147@gmail.com

JUST THE TWO OF US

This is the first in a series of 30 “Floral Portraits” I did which were scheduled to be published in 2021 but the pandemic caused the publishing house to close their doors. All of the photos in the series show 2 flowers juxtaposed with one another in various “poses.” My hope in creating this body of work was to express the intimate, person-loving relationship between two people. I have given them to newly weds, as anniversary gifts, etc. Artistically, I have BROKEN A RULE (!) which states that the human eye and brain are much more accepting of pictorial representatives of items when shown in an odd number. Further, we are supposed to be “put off” by pictures that show items in even numbers. I think not!



WALTER W PERROTT III, MD
Douglasville, Georgia
wwperrott@gmail.com

THE GREAT JUMPING WEEVIL

I became involved with Macro Photography at the beginning of the pandemic. The small world is truly amazing. In 10 minutes outside with a net, some of the most incredible creatures can be found in your own backyard. This image of a Weevil was captured using a D850 Nikon camera, bellows, a 5X mitutoyo microscope objective and three flashes. Approximately 135 images were obtained at 20 µm depth of field per image. These images were stacked using a software program, Zerene Stacker, and composited into a single image. This represents, for me, an almost endless world of truly amazing subjects to photograph. I am most interested in the artistic rendering possibilities this genre represents. Please enjoy a glimpse into this small world around us.

EVELYN PESIRI
Ellenwood, Georgia
evelynpesiri@att.net

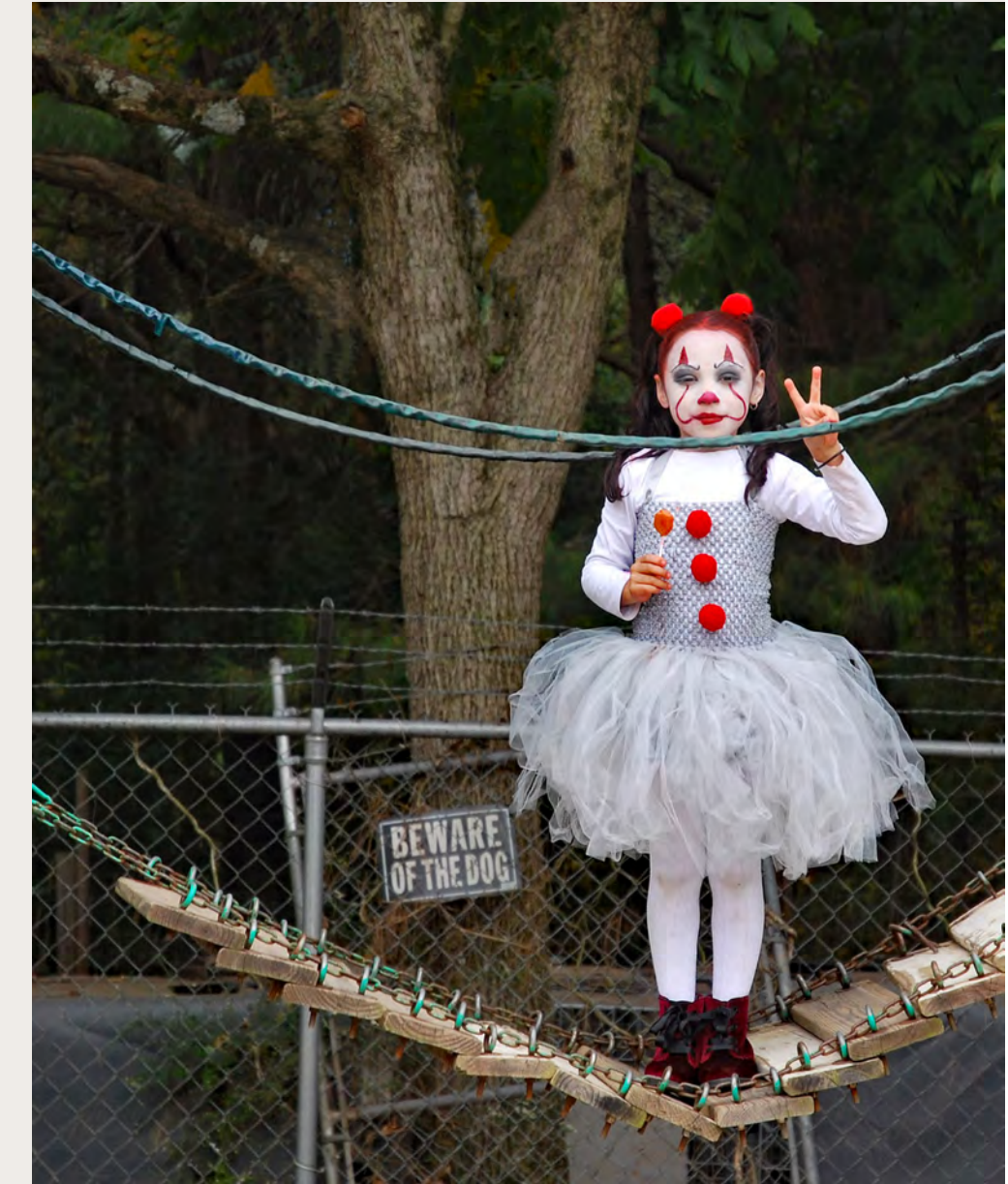
PEACE IN THE PLAYGROUND

I captured this image at an event venue near my home in Ellenwood, Georgia, where this child attended a costume-themed wedding. With permission from her parents, she had escaped the main dining area to spend time in the playground with friends. When I approached, the child was facing away. I hit the shutter, then called out to get her attention, ready for my next shot. What a surprise to see her painted face! Without coaching, the child stepped forward and offered me the sign of peace.

I started taking photographs long ago and found that photography helped me see.

My high school experience included a fully equipped black-and-white darkroom and talented, enthusiastic teachers. Early on, I experimented with high contrast papers, photo-oil colors, and photo collage. After high school, while attending Purdue University, I took as many photography classes as were offered and worked as darkroom assistant. In exchange for the work, I was given a key and 24/7 access to the darkroom, where I spent many “all-nighters” working under the red light.

As a young mother, I carried both my film camera and my daughter everywhere I went. When my daughter grew up and moved away, I ventured toward digital photography.





PATRICIA THOMAS
Cartersville, Georgia
pa4thomas@yahoo.com

VANISHING WONDER

According to climate experts, glaciers are disappearing from the northern hemisphere at an alarming rate. During a recent exploration of the western coast of Alaska I had the chance to visit Glacier Bay National Park, which offers breathtaking views of land and sea. I photographed this image, not only to share the amazing view of the blue skies, rugged mountains and beautiful turquoise water, but to also bring attention to the quickly diminishing glaciers that play such a valuable role in our ecosystems. It was an incredible journey that I would highly recommend to all explorers.

DELORES SMITH
Stone Mountain, Georgia
deloressmith101@gmail.com

TORN BETWEEN

Every year as flowers bloom in all their glory in the spring and summer months, one of the main places I visit is the State Botanical Garden of Georgia in Athens. The garden is supported and managed by the University of Georgia. The Discovery and Inspiration Garden is the very first garden you see as you enter this beautiful venture. I, among the many visitors, often find so much inspiration here that it's hard to leave this area to discover all the features exhibited here.

This image was taken in the center of this area in a favorite spot of mine, the pond. My goal was to photograph water lilies. To achieve eye level photography of the beautiful lilies in the pond, it was necessary to lay on the ground. While I was down there, I noticed this dragonfly perched on what I later learned was a carnivorous (pitcher plant). I was amazed at how long he was sitting there staring straight ahead. Later I learned that this plant emits a luring aroma and contains a substance that's narcotic in nature and helps it capture its prey. It was a little sad to learn this, however in my research, I did learn of their benefits to the ecosystem.

In post-production, the busy background, though blurry, seemed to distract too much from the subject, so I replaced it with a solid background so that the various elements of the subject could be appreciatively viewed. The resulting image is more artistic and colorful as it shows the beautiful structure of the dragonfly.





MICHAEL ROGERS
Kennesaw, Georgia
michaelr26@comcast.net

**SMOKY MOUNTAIN
STEEPLE**

This is part of a series of ongoing images I'm calling Appalachia. I want to capture the ancient mystery, the foggy atmosphere and the overwhelming peaceful and serene feeling I get when I'm in the Great Smoky Mountains. To help achieve this I chose to process these images with the look of Platinum Palladium.

MICHAEL ROGERS
Kennesaw, Georgia
michaelr26@comcast.net

LINES IN THE SAND

While photographing on the beach at Okaloosa Island, Florida, I came across this fence that separates the public access from U.S. Air Force property. At this time of morning the light created sharp shadows of the posts in the sand. I saw this as a very graphic image. Because of the contrast between the darkening sky and the lighter dunes of untouched sand, I knew this would be best expressed in black & white.





STELLA SPYROU
Douglasville, Georgia
stella.spyrou@gmail.com

MILL RUINS

Sweetwater Creek State Park in Douglas County is a beautiful park home of the Manchester Mill ruins destroyed during the Civil War. Many people walk, fish, run or take pictures in this park, but few cross to the other side of the creek and walk along the creek to get this view of the ruins. My husband and I made this trip many times, walking about a mile from the parking lot and climbing over rocks to reach a point where the ruins are visible with no distractions from tree branches. It is a beautiful view changing with the season worth the walking!

PAT STEPHENSON
Cartersville, Georgia
pmstephenson@bellsouth.net

THE PRELUDE

This musician was part of the yearly Civil War Reenactment at Picketts Mill History Museum. The music that the group performed was current of the time that the Civil War was happening, such as the Westphalia Waltz. I was drawn to the gracefulness of his hands as he played and the music was hauntingly beautiful. The original photograph was in color with a very busy background. I converted to black and white, edited the background, all of which dramatically enhanced the shadows and textures that were not evident in the color version.





BARRY VANGROV
Atlanta, Georgia
bvangrov@yahoo.com

DRIFTWOOD FRAMED SUNRISE

Driftwood Beach on Jekyll Island is one of my favorite sunrise locations. I've photographed it many times as part of a continuing photo series that explores the barrier islands and wetlands along the southeast coast. It's a popular location for other photographers as well, so I search for unique compositions that I haven't seen anyone else make before. In this image, I tried to create some sense of order out of the chaotic jumble of driftwood. I was fortunate when the location of the rising sun lined up perfectly to be framed by the driftwood branches.

BARRY VANGROV
Atlanta, Georgia
bvangrov@yahoo.com

LIVE OAK IN THE FOG

Void of color the world is reduced to its essence of form and structure. My black and white images are an exploration of this monochromatic world of patterns, shapes, tones and textures. I am particularly drawn to searching for naturally occurring geometric patterns and to capturing the myriad different textures found in nature, both tactile—hard, soft, rough, smooth, sharp, grainy, and visual—translucent, misty, foggy, wispy. Morning fog is a landscape photographer's dream. The solid geometry of the sculptured limbs combined with the delicate textures of the leaves and hanging Spanish moss makes the live oak tree a perfect subject.





AL WOOD
Franklin, Tennessee
woodcharlesa@yahoo.com

**LAST TRADITIONAL BARBER SHOP
IN TOWN**

This image is from a project that I have just finished after photographing traditional barbershops for the last two years. This image was taken in Winchester, Tennessee which is best known as the hometown of Dinah Shore, a famous entertainer when I was growing up. When I went inside the barbershop it brought back memories of the barbershop that my father took me to every 2 weeks on Saturdays when I was a child. Just like that barbershop the walls were lined with similar simple chairs that had several men sitting in them. Also like that barbershop, the barber and the customers/visitors were in continual conversation between each other. All of the barbers that I met during this project have been proud of their profession and this gentleman was quick to let me know that he had the last traditional barbershop in town.



AL WOOD
Franklin, Tennessee
woodcharlesa@yahoo.com

**PORT ROYAL
FARMERS MARKET**

I enjoy photographing farmers' markets and do it as often as I can. It is similar to street photography in several ways. What I like to photograph most are the vendors, which are often interesting characters, and their interactions with customers. This image was made at the farmers' market in Port Royal, South Carolina in January so people are wearing jackets to keep warm. The location and atmosphere of this market are unique when compared to other markets I have photographed. It is open only a few hours on Saturdays during the early morning and the morning sun passing through the Spanish Moss is very picturesque, especially when there is a little fog.

SPONSORED BY:

THE **BOOTH** MUSEUM

a Smithsonian Affiliate

BoothPhotographyGuild.org